



# Secure Print Management Suite

Solutions designed to enhance operational efficiency and reduce environmental impact.





# Innovating Enterprise Solutions Since 1999

With over 25 years of experience in developing advanced technology solutions, Entera pioneer in crafting innovative, cost-efficient enterprise-grade software; meticulously tailored to diverse industry needs. Our solutions are designed to optimize workflow efficiency, enhance data security, drive sustainable growth, and reduce environmental footprint while delivering significant cost savings for businesses of all sizes and industries.



4 offices in Istanbul,  
Ankara, Palo Alto - USA,  
and Cherkasy - Ukraine



A dedicated team of  
skilled professionals  
with specialized  
expertise in the field

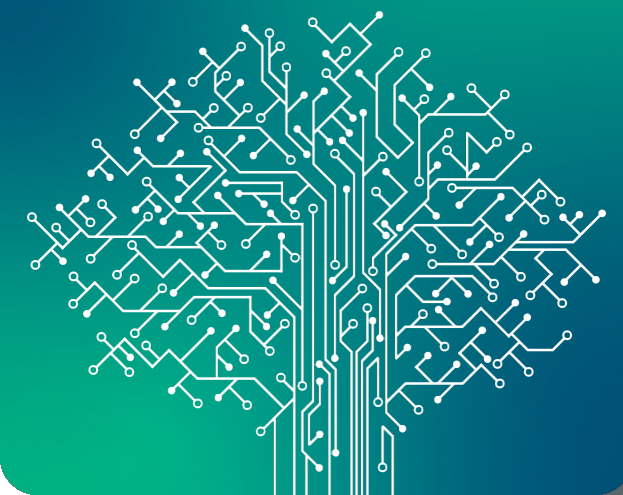


Unique, innovative and  
tailored secure  
enterprise software  
solutions



Committed to social  
responsibility and  
sustainability, striving to  
reduce carbon footprint  
and greenhouse gas  
emissions

25+ Years





# Enterprise Software Solutions



SecuriPRINT® Solution Family  
Secure Print Management Printer  
Fleet Management  
Print Logger  
Toner Saver

**securi**pass

SecuriPASS Advanced  
Multi-Factor  
Authentication and  
Integrated Identity  
Verification Platform



DCM  
AI-Driven Next-Generation  
Document Recognition and  
Routing Platform

**securi**fax

SecuriFAX Secure  
Enterprise and Service  
Provider Fax  
Management System

## Hardware Solutions



SecuriPRINT Terminal  
Secure Intelligent Print  
Terminal for Non-Smart  
or Traditional Printers



SignPAD  
Forensic-Grade Signature  
Tablet: Capture Signatures and  
Handwriting with Advanced  
Multimedia Capabilities



SecuriCARD  
Advanced Mifare/HID  
Multi-Reader for Enhanced  
Access Control



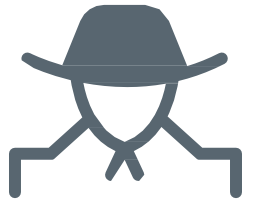


# SecuriPRINT

Comprehensive, Loggable Central  
Secure Print/Scan/Copy  
Management Suite



# SecuriPRINT Logger



Meticulously records and reports  
all print job activity across  
distributed organizations within  
the corporate network



# SecuriPRINT Terminal

Transforms Non-Smart or Traditional  
Network Printers into Intelligent and  
Secure Print Centers

# SecuriPRINT Fleet



Integrated Fleet Management System  
for Monitoring Real-Time Printer  
Status, Consumables Usage, and  
Alarms Across the Corporate Network  
from a Central Location



# SecuriPRINT



## “Advancing Print Management”

SecuriPrint is a revolutionary "Secure Print Management" platform that ensures the enhanced security, tracking, reporting, and centralized management of printing, scanning, and copying operations carried out in single or distributed locations.

End-to-end Secure Print Management  
The cutting-edge SecuriPrint “Secure Print Management” suite ensures strict policy compliance, meticulous record-keeping, and unrivaled precision in document workflows.





# Exceptional Features of SecuriPRINT

Alongside its numerous advanced features, SecuriPrint offers the following unique features:



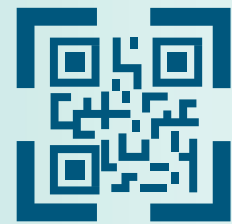
## Encryption

End-to-end encrypted communications in transit, and temper-proof critical data at rest. Customizable encryption levels and algorithm options



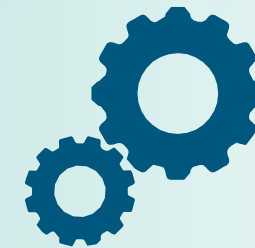
## Content Filtering

Restrict print, scan, and copy operations based on content through user or group policies. Receive alerts on third-party SIEM platforms for enhanced security monitoring



## Watermark and QR Code

Ensure physical tracking of print, scan, and copy jobs with unique watermark and QR codes. Manage styles, positions, and exceptions through group/department-based policies

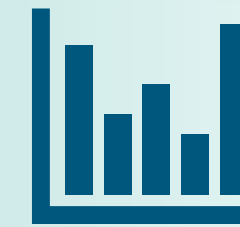


## Enterprise Architecture

SecuriPrint ensures operational resilience through a highly available, geographically redundant, and load-balanced architecture.

Integrates with multiple MS Active Directory instances, corporate SIEM & SysLog solutions, in an active/active or active/passive HA/LB architecture.

Offers local management and centralized tracking for configuration, inventory, logging, license, and physical document tracking



## Logging and Reporting

Comprehensive logging and reporting system captures all user and admin activities via a central tamper-proof interface. Detailed and summary reporting templates, organized by department, user, printer, and printer group, provide a complete enterprise overview.

# Content Filtering



- Establish keyword-based security policies within organizations for enhanced data protection.
- Enforce Data Leakage Prevention (DLP) for all printed, scanned, and copied documents.
- Apply different policies to various departments or users.
- Utilize Regex support for creating intricate rules.
- Operation-on-detection: block the job and/or notify system administrators, trigger alarms on integrated SIEM systems

## Blocking Properties:

Maximum page count per job

100

## OCR and content filtering

Secret

×

Document

×

\*ProjectName\*

×

202310\*

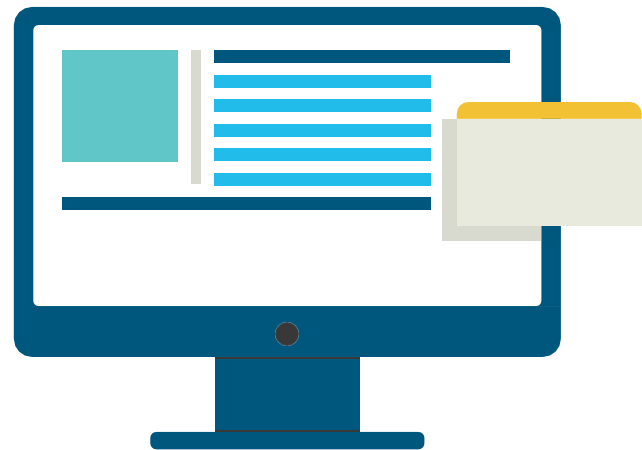
×

+

Add



# Physical Document Tracking



- Every printed, scanned, and copied document is stamped with watermarks and QR codes.
- Ensures undeniable and undistputable link between user and document.
- Comprehensive record of document details and its journey from initial request to physical print-out.

## Repository

Watermark search:

424a600ec4d2774d862802c0502a6d9f

### Results:

Request date: 18-10-2023 16:31:37

Processed date: 18-10-2023 16:14:59

User: test

Department: Policies\_Test

Printer: RICOH01

Watermark:  
424A600EC4D2774D862802C0502A6D9F

File name: Microsoft Word - 1page\_BW

WindowsLoggedInUser: Test

SecuriPRINT Login:

Workstation: ALLINONE

Domain: ALLINONE

IP: 192.168.6.233

TEST



ENTERA Teknoloji



ENTERA Teknoloji



ENTERA Teknoloji



# Archiving



- All printed, scanned, and copied documents within the organization can be archived.
- Archived documents are securely stored encrypted and accessible solely within the SecuriPRINT management interface.
- Access to archived documents is restricted to users with the 'Super Administrator' role within the SecuriPRINT management interface.
- Every instance of viewing an archived document is logged in a tamper-proof manner.

## Repository

Watermark search:

424a600ec4d2774d862802c0502a6d9f

### Results:

Request date: 18-10-2023 16:31:37

Processed date: 18-10-2023 16:14:59

User: test

Department: Policies\_Test

Printer: RICOH01

Watermark:

424A600EC4D2774D862802C0502A6D9F

File name: Microsoft Word - 1page\_BW

WindowsLoggedInUser: Test

SecuriPRINT Login:

Workstation: ALLINONE

Domain: ALLINONE

IP: 192.168.6.233

TEST

424A600EC4D2774D862802C0502A6D9F

# Advanced User/Group And Policy Management



- Simultaneous user synchronization across various Active Directory structures
- Hierarchical group structure based on Active Directory
- RBAC role-based authentication with 7 role types
- Application of policies to users, groups, and departments
- Policy-driven control over printing, scanning, and copying permissions
- Advanced management of conflicting policies

Edit User

Account

abdeleon

Name

Ann Deleon

Email

ABDeleon@entera.test

Access level

User

Enabled

☒

Authorization Override

☐

AD Authorization

☒

Quota management active

☐

B&W quota

0

Currently used quota: 0

Color quota

0

Currently used quota: 0

Scanning

☐

Personal folder

Manage cards

Update

General properties:

Name

Policies\_Test

Enabled

☒

Printers

Select Printer

Printer pool

Policies\_Test

Duplex

Default

Color

Default

Printing hours

0 : 0 - 0 : 0

Scan allowed

☒

Copy allowed

☒

Maximum page count per job

0

Watermark:

QR Enabled

☒

QR Position

All corners

Watermarks enabled

☒

Four diagonal

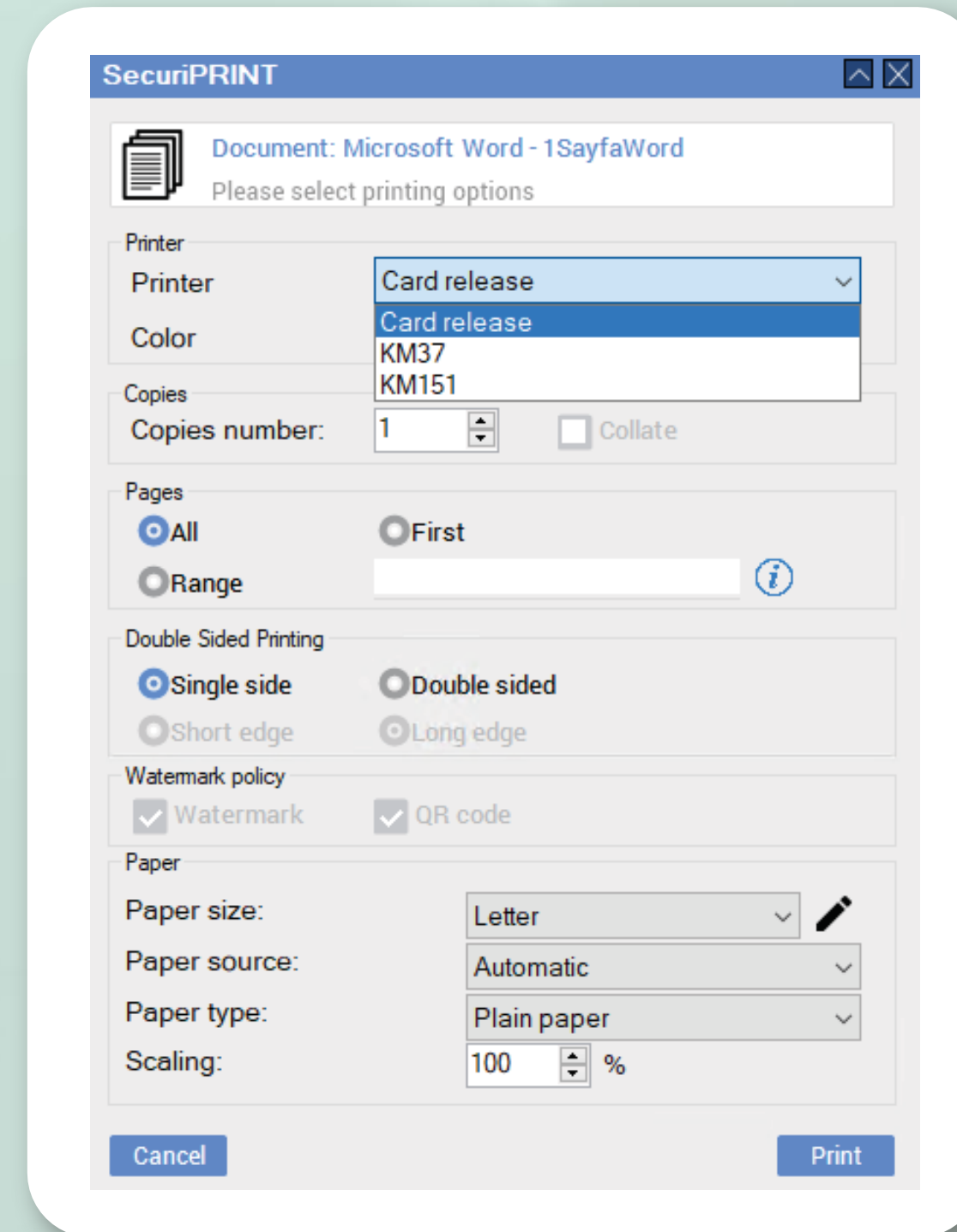


# SecuriPrint Agent



## Secure Printing Application For Pc

- Customized printer selection based on user policies, including options for card printers and authorized direct printing devices
- Session authentication during output, offering the option to log off the computer/session in case of login failure
- Capability to prevent uncontrolled printing from both locally attached and network printers
- End-to-end encrypted communication

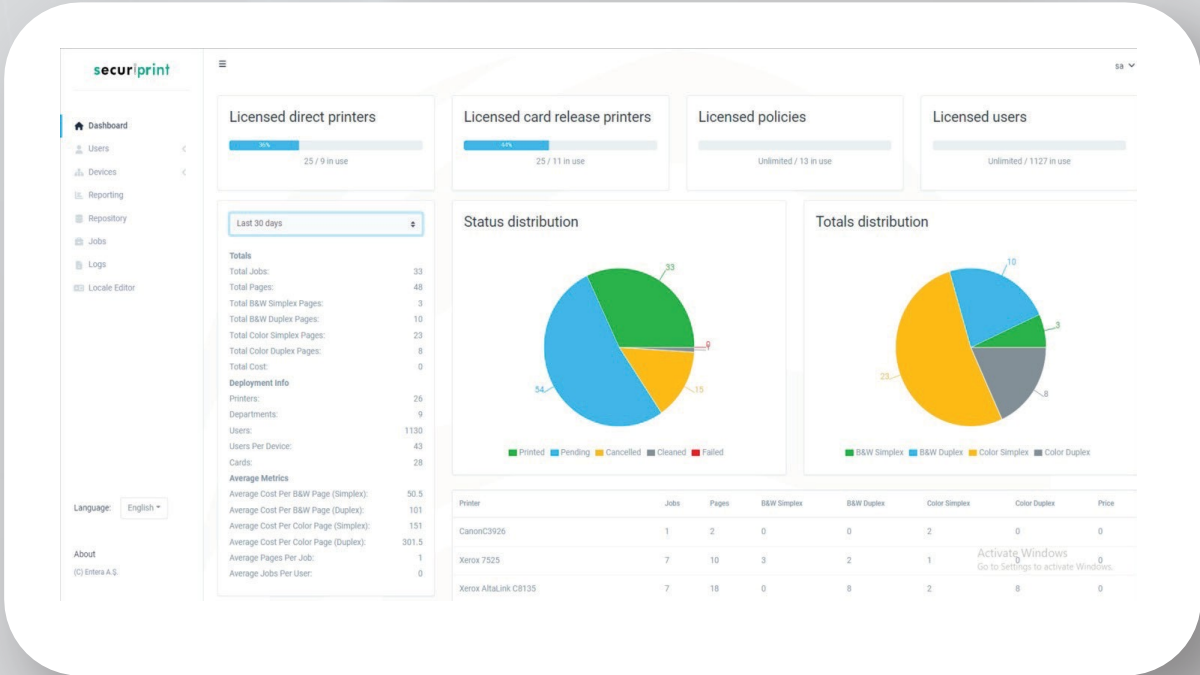




# Effecient Management And Monitoring

System administrators can efficiently track and report user actions through the intuitive reporting interface, organized by department, user, or printing device. Key features of the reporting system include:

- Web-based reporting
- Administrator summary reports
- Detailed reporting by date, time, printer, unit, AD group, and printer group
- Scheduled and exportable report definitions
- In-depth print and cost statistics



Date	Type	Task Id	Message
01-03-2024 17:27:23	Normal		Scheduled event: AD sync finish processing start
01-03-2024 17:27:23	Normal		Scheduled event processing finished.
01-03-2024 17:26:07	Normal		Scheduled event: AD sync processing start
01-03-2024 17:05:06	Normal		Scheduled event: Pending jobs hourly cleanup processing start
01-03-2024 17:05:06	Normal		Scheduled event processing finished.
01-03-2024	Normal	a76rha7ef0bh774asef1efc01e456ad3	Job sent to printer

# SecuriPRINT Orchestrator



SecuriPRINT Orchestrator offers centralized log collection, inventory tracking, watermark search, and license management for distributed organizations.

- Central configuration management covering the entire feature set of SecuriPRINT.
- Records generated on edge SecuriPRINT servers are regularly transferred to the central server.
- Efficiently manage and distribute, reclaim and redistribute licenses within the organization.





# SecuriPRINT Terminal



SecuriPrint Terminals are designed to transform non-smart printers into intelligent and secure printing solutions.

Offering an intuitive interface, they efficiently manage print jobs while ensuring heightened security.

Compatible with all network devices, SecuriPrint terminals seamlessly integrate with traditional printers, upgrading them to smart and secure printing systems

## Highlights:



Customizable



Centralized  
Administration



Cost  
Efficiency



Advanced  
Reporting  
Capabilities



Document  
Tracking



Enhanced Print  
Environment  
Security



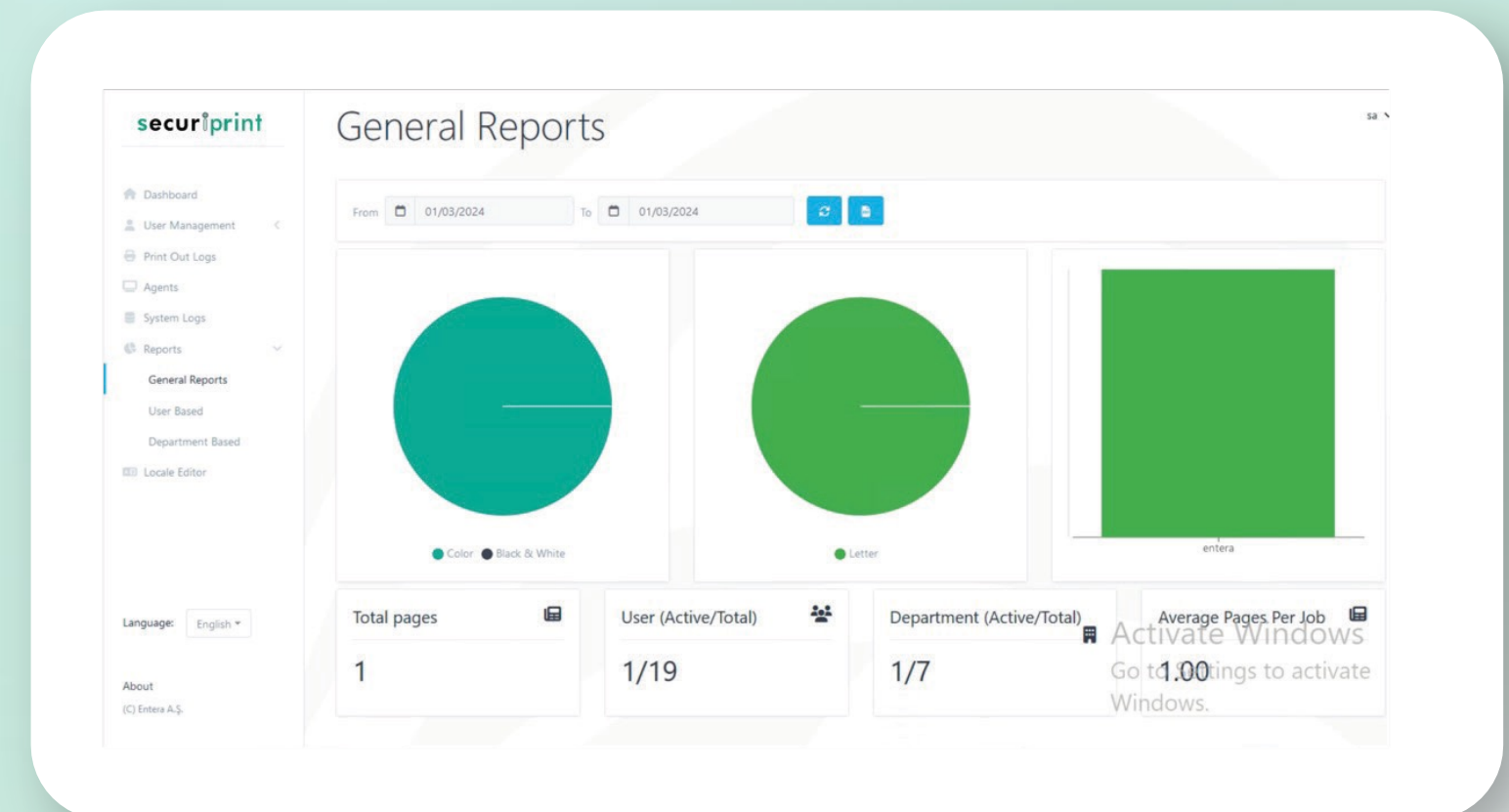
Each Unit  
Supports up to  
3 Printers

# SecuriPRINT Logger



## Enhance Security with Comprehensive Logging

- Centralized, customizable logging for the entire printing process.
- Transparently monitor and log all print jobs sent to directly connected and network printers.
- Unlimited department and branch management.
- Advanced and customizable department-based quota management
- Web-based reporting and management interface



Compatible with all printer brands and models.

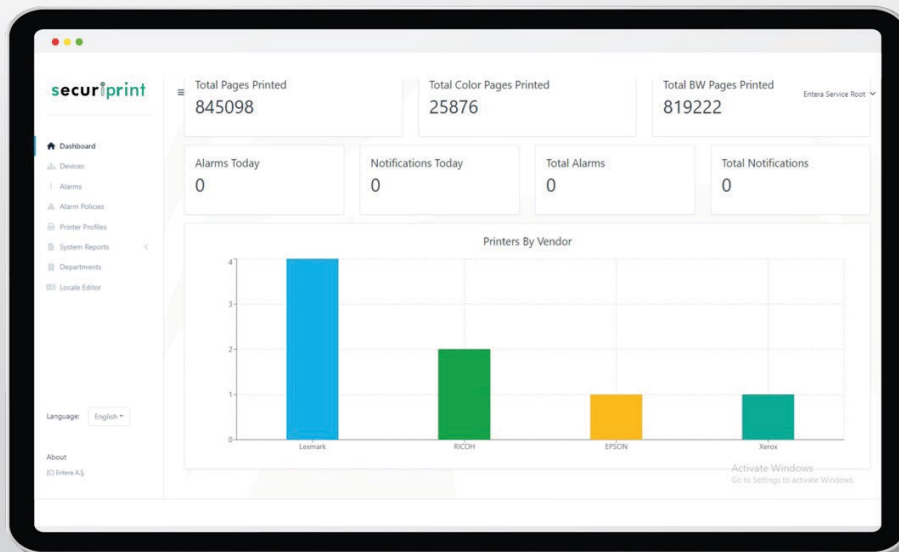
Customizable MS Active Directory synchronization.

Detailed print reports; including breakdowns by user; branch; printer brand; paper size and color usage.

Supports REST API for seamless integration with third-party applications.

Minimal client-side footprint, distributed centrally via MS Group Policy and/or SCCM.

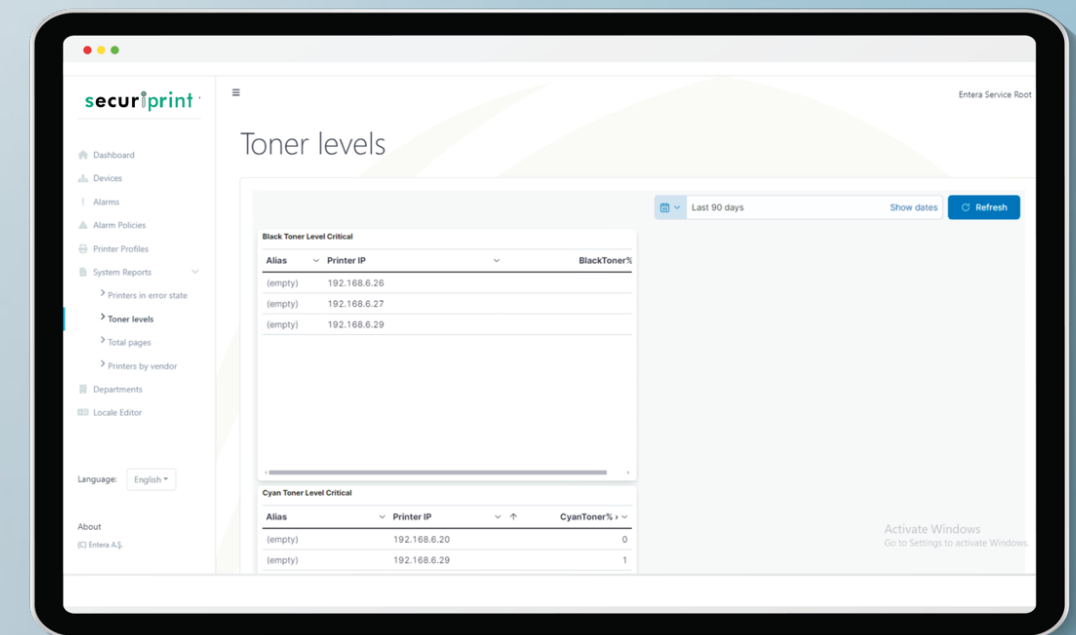
# SecuriPRINT Fleet



## Simplify Printer Fleet Management

SecuriPrint Fleet offers a comprehensive solution for efficiently managing printer fleet operations, including streamlined management, real-time insights into supply levels and performance, and simplified tracking of consumables and fault detection.

- Predictive consumption models for toner levels
- Proactive material ordering
- Real-time printer and consumables status tracking
- Automatic fault reporting
- Page count information
- Advanced pricing model
- Automatic location detection
- Advanced filtering and reporting
- End-to-end encrypted data transmission





# SecuriPRINT Fleet



## Simplify Printer Fleet Management

Alarms List

Date	Type	Department	Printer	Description	IP Address	Actions
22-10-2021 13:08:22		Entera Demo	Lexmark C950	Magenta toner is depleting soon: 24%	192.168.6.20	
22-10-2021 13:08:22		Entera Demo	Lexmark C950	Cyan toner is critically low: 0%	192.168.6.20	
22-10-2021 13:08:21		Entera Demo	Lexmark C792	Cyan toner is depleting soon: 20%	192.168.6.66	
22-10-2021 12:58:15		Entera Demo	Lexmark C950	Magenta toner is depleting soon: 24%	192.168.6.20	
22-10-2021 12:58:15		Entera Demo	Lexmark C950	Cyan toner is critically low: 0%	192.168.6.20	
22-10-2021 12:48:04		Entera Demo	Lexmark C950	Magenta toner is depleting soon: 24%	192.168.6.20	
22-10-2021 12:48:04		Entera Demo	Lexmark C950	Cyan toner is critically low: 0%	192.168.6.20	
22-10-2021 12:48:04		Entera Demo	Lexmark C792	Cyan toner is depleting soon: 20%	192.168.6.66	
22-10-2021 12:37:58		Entera Demo	Lexmark C950	Magenta toner is depleting soon: 24%	192.168.6.20	
22-10-2021 12:37:58		Entera Demo	Lexmark C950	Cyan toner is critically low: 0%	192.168.6.20	

Hosts

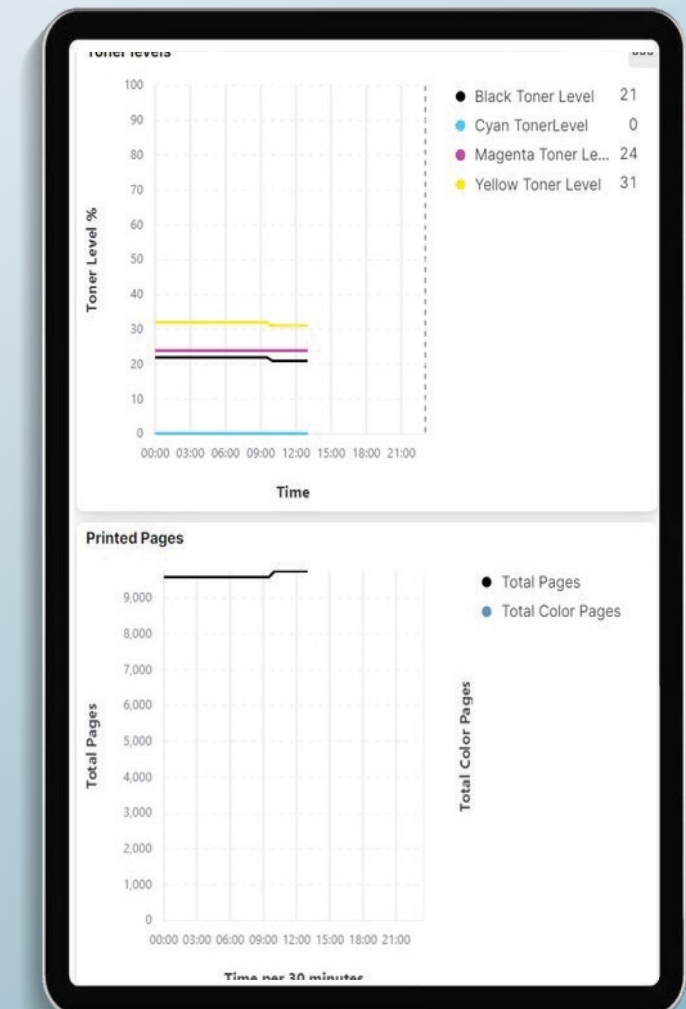
Status	IP Address	Alias	Department	Vendor	Model	Toner Level	Actions
	192.168.6.30		Entera Demo	EPSON	EPSON WF-C5790 Series		

Toner Level

Black: 72% Cyan: 66% Yellow: 66% Magenta: 81%

Printer data

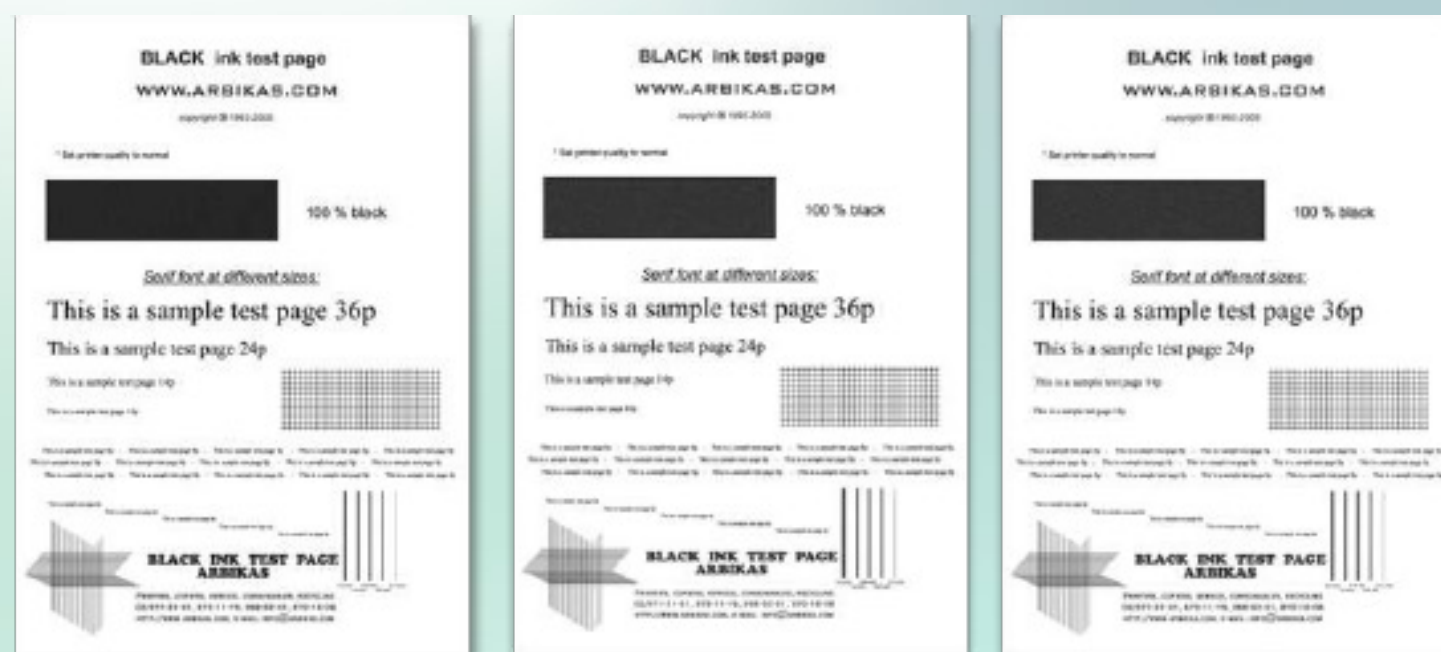
Device Status: Running  
Printer Status: Idle  
Printer Errors:  
Total Black Pages: 83  
Total Color Pages: 39  
Mac Address: 9cae03b45149  
Model: EPSON WF-C5790 Series(X388121479)  
Description:  
Serial Number: X388121479  
Department: Entera Demo  
Color Capability:   
Hostname: EPSONB45149  
Firmware: 17.65.CV10KB  
First Discovered: 20-10-2021 10:43:27  
Scanned On: 24-11-2021 16:21:49



- Customizable alarm and snooze rules.
- Receive notifications via email, SMS, Syslog, SNMP Trap, or custom integrations.
- Real-time toner level monitoring; receive custom alerts for threshold levels.
- Predictive toner level tracking and automated consumables ordering ensure uninterrupted printing operations.

# Entera Toner Saver

Patent-pending algorithms optimize pixels while preserving readability, ensuring your content remains clear, appealing, and cost-effective.



Delivers toner savings while maintaining print quality and readability through innovative algorithms prioritizing content preservation and optimization.

10%  
Toner Saving

This

20%  
Toner Saving

This

35%  
Toner Saving

This

# Cost Efficiency Benefits



SecuriPRINT offers significant cost savings across total print expenses through a range of efficient features.



**Automatic Job Purge:**  
With automatic purging of pending jobs after a specified lifetime or at special cut-off times, such as every two hours, we save an average of 18% of print jobs.

**Toner, Paper, and Energy Savings:** SecuriPrint optimizes resource usage by implementing policies that observe all printing processes. Users are restricted to printing only from designated printers and are encouraged to use duplex and black-and-white printing, resulting in noticeable savings on toner and paper.

**User Management:**  
SecuriPrint provides comprehensive user tracking, quota management, and working hours management through policy configurations for users and groups. By setting maximum page limits, quotas, and printing hours, organizations can effectively manage printing costs. Additionally, color and black-and-white printing jobs can be tariffed based on page sizes per printer.

**Print Optimization:**  
Prevent unnecessary printouts and enable users to modify job properties directly on the printer. This proactive approach reduces unnecessary printing and enables users to switch to more cost-effective settings, such as black-and-white printing or duplex printing, ultimately saving on resources and expenses.





# Environmental Benefits of SecuriPrint: Promoting Sustainable Green Printing Practices and Reducing Carbon Footprint.

SecuriPrint plays a crucial role in promoting environmentally responsible printing practices, contributing to a greener and more sustainable future. Through its advanced print management and toner-saving tools, SecuriPrint enables and encourages responsible printing behavior, resulting in reduced toner usage and fewer toner cartridge productions and consumptions.

Additionally, by promoting duplex and black-and-white printing and implementing user tracking and quota management, SecuriPrint helps minimize paper waste and decreases overall paper consumption. By preventing unauthorized users and print jobs, SecuriPrint further reduces unnecessary printing, ultimately decreasing greenhouse gas emissions associated with the production and disposal of printing materials.

With its comprehensive approach to print management, SecuriPrint embodies a commitment to environmental stewardship, empowering organizations to minimize their ecological footprint while optimizing printing efficiency.





## Partners

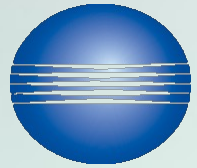
**Canon**



**EPSON**  
EXCEED YOUR VISION



**DEVELOP**



KONICA MINOLTA



Lexmark™



Microsoft



**KYOCERA**

Document Solutions

**RICOH**  
imagine. change.



**TÜRKİYE  
SİBER GÜVENLİK  
KÜMELENMESİ**

**Türk Telekom**

**xerox**





## Our References







# Thank you

 [info@entera.com.tr](mailto:info@entera.com.tr)

 +90 212 285 11 50

 [entera.com.tr](http://entera.com.tr)

## İSTANBUL

Atatürk Mah. Şeref Sok. No:16  
Ataşehir/İSTANBUL

## ANKARA

Söğütözü Mah. 2177 Cad. VİA  
Twins İş Merkezi No:10 B/66  
Çankaya/ANKARA

## UKRAINE

Priortova str. 42/1,  
Cherkasy 18016, Ukraine

## USA

Palo Alto Business Park  
San Antonio Rd. Palo Alto  
CA-94303